

Bowie State University
Martin Luther King Jr. Communications Arts & Humanities Building
14000 Jericho Road
Bowie, Maryland, 20715

Call for Artists: Public Art Project Request for Qualifications



Solicitation #: 115817-F

Public Artwork
Commission Budget: **\$515,000 (all-inclusive)**

Issued: November 1, 2021 (Rev Dec 3, 2021, Rev Jan 10, 2022)

Application Deadline: EXTENDED to 5:00PM (EST) Wednesday, February 16, 2022

Apply Online: [APPLY ONLINE HERE](#)

Artwork proposals are NOT accepted at this time.

Contact: Ryan Patterson
Public Art Project Manager
Maryland State Arts Council
ryan.patterson1@maryland.gov
(443) 721-3085

Call for Public Artists

Bowie State University, a member institution of the University System of Maryland, is building the new Martin Luther King Jr. Communication Arts & Humanities building (CAH). This building is being designed by Perkins and Will and is expected to open in Fall 2024.

Through this Request for Qualifications (RFQ) process, managed by the Maryland State Arts Council's Public Art Across Maryland program, artists (or artist teams) will be invited to develop concept proposals for a new and original public artwork to be featured prominently at the new building.

BSU has been a voice and powerful force within the Maryland community for over 150 years, counting many of the state's educators and leaders among its alumni. This public art project represents an opportunity for the BSU's history and heritage to be communicated visually through two and three-dimensional site specific artwork. The opportunity is open to any professional artist or team residing within the United States. Particular attention should be paid to the agency of the past and present BSU community in the telling of their story through this work of art.

This document provides a brief scope of the new building's architecture and academic functions, the desired themes and goals of the artwork, and guidelines on how interested artists can apply.

A live *"How to Apply to Artwork Commissions"* webinar, will be held on: **November 10, 12:00-1:00 pm**. You can register for the info session [here](#). A recording of the webinar will be available [here](#) following the event.

Bowie State University

Founded in 1865, Bowie State University is the oldest Historical Black College/University (HBCU) in Maryland and one of the ten oldest in the country. It is also a diverse university whose students, faculty, and staff represent many ethnic and cultural backgrounds.

Bowie State began as an outgrowth of a normal school opened in 1864 by the Baltimore Association for the Moral and Educational Improvement of Colored People, an organization dedicated to offering educational opportunities that the state failed to provide for its newly emancipated citizens¹. From those humble beginnings, Bowie State has become a comprehensive university that continues to build on its legacy of providing access to a high-quality and affordable education.

In addition to its 23 undergraduate majors, Bowie State offers 20 master's degree programs, 16 specialty certificates, and two doctoral programs with a specific focus on science, technology, business, education, and related disciplines. A supportive academic environment empowers students to think critically, make discoveries, value difference, emerge as leaders, and lifelong learners dedicated to civic responsibility.

As a member institution of the University System of Maryland, Bowie State upholds the system's mission of providing high-caliber, accessible, and affordable educational opportunities. The University supports Maryland's workforce and economy by engaging in strategic partnerships, research, and public service to benefit our local, state, national, and global communities.

¹ An interactive timeline of Bowie State University's history is available at this [LINK](#)

Martin Luther King Jr. Communication Arts & Humanities Building

The new Martin Luther King Jr. Communication Arts & Humanities (CAH) building is a replacement for the existing, adjacent Martin Luther King Jr. Center. The new CAH building is being designed by Perkins & Will and will be constructed by The Whiting-Turner Contracting Company.

The guiding theme of the strategic plan in the building's development is:

"Changing the way we deliver excellence . . . to build a collaborative academic community that will transform the College of Arts and Sciences and subsequently BSU for a better future."

At 192,000 Gross Square Feet /107,000 Net Square Feet, the new Communication Arts & Humanities building will provide general educational classrooms, collaborative student study spaces, specialized labs, demonstration spaces, and administrative offices for four of the University's interdisciplinary programs:

Communications

History and Government

Language, Literature and Cultural Studies

Military Science

The building will have two "inflection points" that serve as primary points of entry and circulation². The student inflection will include an outdoor courtyard and small amphitheater space. The community inflection will serve as the entrance to a new 1,500 seat indoor auditorium that is designed to host cultural events and live performances serving both the campus and the public.

² See attached Exhibits

The student and community ‘inflections’ are located at significant points where the building geometry shifts. The term ‘inflection’ also references the intention that these spaces serve as places of gathering, exchange, collaboration, and expression.

Sustainability on Campus

Bowie State University recognizes the need to reduce the impacts of global warming. The University is deeply concerned with the scale and speed of global warming and its potential for large-scale, adverse health, social, economic, and ecological effects. Over the course of several years, the institution has updated campus master plans, conducted an environmental audit, and made material investments in sustainable infrastructure.

Part of BSU's sustainability goals is to be conscious of how energy resources are utilized in our buildings. The campus now has solar panels in four campus locations that generate more than 15% of the campus' energy needs.

The new CAH building is projected to earn, at minimum, the U.S. Green Building Council's LEED Gold Certification or higher. Artists or teams commissioned to create a public artwork for the new CAH building should keep in mind BSU's overall sustainability goals and the LEED rating for the building when designing and developing their artwork.

Location of Campus & New Building

Bowie State's campus is located on a serene 300-acre wooded tract in the City of Bowie, MD. Bowie is located in Prince George's County and is the fifth most populous city in Maryland. The suburban campus is part of a unique and diverse metropolitan area tucked between the United States capitol of

Washington, D.C. to the southwest, Maryland's state capital of Annapolis to the east, and just south of the Greater Baltimore metro area. The BSU campus is easily accessible to commuters arriving by car, bus, and commuter rail, with a MARC station on the western edge of campus, adjacent to the new Communication Arts & Humanities building.

The Communication Arts & Humanities building will be located in the southwestern corner of the BSU campus, situated on the northeastern side of the existing MLK Center, on current Parking Lot F³.

The new CAH building will be a prominent feature on Henry Circle, a hub of campus activity at the main entrance of campus. The new building will frame the western edge of campus and provide a new quad to receive people from Henry Circle. The quad space offers a variety of outdoor learning and event spaces, plazas, and pathways. The building terminates the southern end of the campus' western promenade. The position of this building and open space reinforces direct pedestrian connections to the existing MARC station.

Commissioned Public Artwork

An all-inclusive budget of \$515,000 has been allocated to commission original public artwork for the new Martin Luther King Jr. Communication Arts & Humanities building. Artists and artist teams interested in this opportunity are invited to submit an application, including a **Letter of Interest** and a **portfolio of previously created work**, and **artist's CV/resume** through this Request for Qualifications (RFQ) process.

An "Area of Work " depicted on the attached Exhibits outlines the perimeter of eligible interior and exterior areas where the final commissioned artwork

³ See attached Exhibits

may be located. The Area of Work includes: the community inflection point (a 3-story glass-fronted atrium/interior lobby), the immediate exterior of this entrance (which may include the lawn and walks towards Henry Circle), and the exterior student-focused courtyard/amphitheater space.⁴

The Area of Work will primarily be experienced by BSU students, staff, and faculty. However, given its central location and the amount of access the public will have to events held in the new auditorium, the artwork will also be regularly experienced by the larger community.

Public Artwork Themes & Goals

The Artist Selection Committee has set the following themes to guide the selected artist or team. The public artwork developed for the new CAH building should reflect the University's core values of ***Excellence, Inclusivity, Integrity, Accountability, and Innovation***⁵ and should also encompass the guiding principles of the four departments within the building.

DEPARTMENT:	GUIDING PRINCIPLE:
Communication	<i>Voice</i>
Military Science (ROTC)	<i>Leadership</i>
History & Government	<i>Heritage</i>
Language Literature & Cultural Studies	<i>Culture</i>

⁴ See attached Exhibits

⁵ Bowie State University's [Mission & Vision](#). Bowie State University's [Core Values](#).

Additionally, selected artists or teams should find an opportunity to interpret and celebrate Bowie State University's place as the first and oldest HBCU in the state of Maryland.

The Artist Selection Committee has set the following goals for interested artists to consider when applying and the selected artist to keep in mind in developing unique artwork concepts:

Relevance - artwork must be appropriate for the chosen location and the CAH and BSU campus mission as a whole.

Sustainability – sustainable materials in line with BSU's sustainability mission and LEED Gold certification of the CAH building.

Originality – the artwork must be original and unique to the Bowie State University, Martin Luther King Jr. Communication Arts & Humanities building project.

Durability & Permanence – resistance to theft and weathering as well as structural sustainability and ease of maintenance.

Additionally, artwork concepts should consider natural and artificial light sources and be viewable from multiple vantage points and elevations. Electricity can be provided for the artwork. Any interior artwork will receive diffuse natural light from curtain wall windows at the east and west ends of the Auditorium lobby. Supplemental lighting, in consultation with the architect and electrical engineer, will come from the public art budget.

Eligibility:

All professional artists or artist teams living in the United States may apply. If artists apply as a team, the team should be listed on the application, specifying a team leader to receive notifications. Artists currently enrolled in a university or college degree program are not eligible to apply. Employees of Bowie State University, the University of Maryland-College Park, and the Maryland State Arts Council are not eligible to apply.

Budget Details:

The all-inclusive budget to commission public artwork for the new Martin Luther King Jr. Communication Arts & Humanities building is \$515,000.

The selected artist's contract will be broken into two phases. Phase I: Concept Design Development and Phase II. Fabrication & Installation.

The total budget is inclusive of all costs associated with the artwork project, including but not limited to: *artist fee and expenses (sub-consultants, travel/lodging, printing, overhead, etc.), artwork shop drawings and specifications; artwork materials and fabrication, lighting fixtures, storage (if applicable), transportation and installation; related permits, license, insurance; and if significant site modifications are made*. The artist will be required to establish a 10% contingency within their proposed budget. Any expenses that exceed the contracted amount will be the artist's responsibility.

Contract:

The selected artist will contract directly with the University System of Maryland (via the University of Maryland, College Park, which will manage the project construction) and work with the Maryland State Arts Council Public

Art staff on all aspects of the artwork, from design development through project implementation and installation. The artist's contract is required to be approved by the Maryland Board of Public Works. A sample copy of the contract entitled "Artwork Contract" is included for review⁶.

Please be advised that the following will be required of the contracted artist:

- 1) The artist must be able to be a registered Maryland vendor and adhere to all applicable state permitting and licensing and tax requirements for the duration of the contract;
- 2) The artist will be required to submit an artwork maintenance manual following artwork installation, and in order to complete their contract.
- 3) The artist is expected and required to attend the artwork dedication event in person if and when such an event takes place.

Submission Procedures:

The application deadline is: **February 16, 2022, 5:00 pm (EST)**

Artists and Teams **must apply online** [CLICK HERE](#) for the application.

Requirements of the Online Application:

- **Contact Information:** For Lead Artist (and artist team if applicable)
- **Statement of Interest:** Explain your interest in this commission opportunity, specifically how you would approach or respond to the themes and goals specific to this project. Please avoid describing a proposed artwork in your statement.
- **Work Samples: Ten (10) JPEG Images of existing relevant artwork:**
Please be sure to include all relevant description information for each artwork (scale, material, year, budget, location, etc.) Work samples may include images of the same work from different angles or highlighting details. Please avoid including more than one image per uploaded work

⁶ See attached

sample. Work samples that are crowded with multiple images may be difficult for the committee to decipher in the initial review.

- **Artist Resume/CV:** Artist teams should include resumes of all artists combined into a single PDF
- **References:** List at least three (3) art and/or design professionals who have detailed knowledge of the artist's work and working methods. Include contact name, title, telephone number, and email address for each reference.

NO ARTWORK PROPOSALS ARE SUBMITTED AT THIS STAGE

A live *"How to Apply: Bowie State University"* webinar, will be held on: November 10, 12:00-1:00 pm. You can register for the info session [here](#). A recording of the webinar will be available [here](#) following the event.

Artist Selection

The Artist Selection Committee will review and score all applications and select up to four (4) semifinalist artists or teams for an in-person oral presentation/interview at BSU. The semi-finalists will tour the site and campus in person, and interview with the Artist Selection Committee, faculty, staff, and representatives of BSU. Artists will individually present their background public art experience and approach to the project.

Semi-finalists will receive a \$5,000 stipend to offset their travel and lodging expenses. **Specific artwork concepts should NOT be proposed as part of the oral presentation.**

Following the artists interviews, the Artist Selection Committee will make a recommendation of the Finalist to receive the commission. The selected Finalist will enter into a contract with the University and begin the Concept

Design Development phase. The artist's contract is required to be approved by the Maryland Board of Public Works.

Evaluation Criteria:

The Artist Selection Committee is seeking an artist with experience working collaboratively with multi-disciplinary professionals to create an original artwork that integrates into the specified site. Applications will be reviewed and scored on the following criteria as they relate to this project:

1. How the applicant's demonstrated experience and Statement of Interest connect to the themes and goals outlined for the public art project⁷.
2. How the applicant's background artwork samples reflect technical skill, authenticity, originality, commitment to material(s)/media and artistic practice, and evoke response or inquiry.
3. The applicant's experience as demonstrated by the resume/CV.

Applications that include artwork concepts may be removed from the review.

Semifinalist Presentations

Semifinalists invited to interview will be asked about their creative process and relevant experience, how they would conceptually approach the project, and the rationale for the proposed approach. The Artist Selection Committee will score the semifinalist artist/team presentations on the following criteria as they relate to this project:

- Unique assets and artistic process of the artist/artist team and what they will bring to the MLK Communication Arts & Humanities building project
- Qualifications, background, and public art experience

⁷ See Themes & Goals section above

- Project approach and understanding of the design vision and BSU campus as a whole

The presentation format may be oral, graphic, electronic/digital or a combination thereof. Artists will have the opportunity to address the Committee with specific questions related to the project.

Artwork concepts should NOT be proposed as part of the oral presentation!

Finalist Selection

Following the semi-finalist interviews, the Artist Selection Committee will select one (1) final artist or artist team. The finalist will enter into a contract with the University that must be approved by the Maryland Board of Public Works. The contract will proceed in two phases:

Phase I: Concept Design Development

The artist finalist will commence the project with the Concept Design Development phase that will include four formal meetings (at least two meetings will be held in-person) as well as intermittent virtual meetings or check-in calls as required:

- **Concept Proposal Presentation:** The artist will present three artwork concepts to the Artist Selection Committee. The concepts will communicate artwork ideas, including form, scale, media, and materials. Following the artist presentation, the artist selection committee will meet and select one concept for further design development.
- **Design Development Presentation:** With the written feedback from the Concept Proposal Presentation, the artist will refine the selected concept into the Design Development package that will include; scaled

plans, elevations, and digital renderings detailing the artwork concept. The package should describe proposed artwork materials, fabrication technique(s), timeline, anticipated maintenance requirements, budget estimate, and a written concept statement.

- **Final Design:** With written feedback from Design Development, the artist will finalize the artwork design. The Final Design package will include revised plans, elevations and renderings, material samples, selected fabricator, schedule, and final estimate.

Fabrication and Installation:

Upon written approval of the Final Design, the artist will be authorized to begin fabrication of the artwork adhering to an agreed-upon final budget and installation and payment schedule. The selected artist will attend artwork ribbon cutting and be available for presentations/meetings with students, the media, and other university and state officials.

Selection and Production Schedule:

RFQ Posted	November 1, 2021
RFQ Application Deadline	February 16, 2022
Semifinalist Notification	By April 2022
Semifinalist Site Visit/Interview (in-person)	May 2022
Selected Finalist Artist/Team Notified Contracting & Procurement	June 2022
Notice to Proceed: Artwork Kick-Off Meeting	July 2022
Concept Design Development Phase	TBD

Concept Design Development Review Presentation to Public Art Committee	TBD
Concept Design Development Refinement presentation to Public Art Committee	TBD
Final Concept Design Development Presentation to Public Art committee	TBD
BSU written confirmation approval of Artwork Design	TBD
Fabrication/Installation Phase Commences	TBD
Fabrication Period ⁸	TBD
Artwork installation in alignment with building construction schedule	<i>Site expected to be available for artwork installation as early as Spring 2024 or NLT than Spring 2025</i>
Projected Artwork Ribbon-Cutting	TBD

⁸ If there is a gap in time between artwork fabrication completion and artwork installation on-site, artists will be responsible for storing artwork including fees and insurance. If the artist wishes to commence fabrication at a later date in alignment with the building construction schedule, projected increased artwork material and fabrication costs must be incorporated in the Artist Fabrication/Installation Contract.

Artist Selection Committee Composition:

User (Contracting) Agency	University of Maryland, College Park
Design Representative	Architect & Landscape Architect
Building User	Bowie State University Staff & Administration
Local Arts Representative	Bowie State University Faculty & Staff
Local Representative	Prince George's County Arts Council
Maryland Public Art Commission	Commission Members (2)
Non-Voting	MSAC Public Art Program Staff

Questions and Inquiries:

All questions and inquiries must be in writing and directed to:

Ryan Patterson, Maryland State Arts Council, Public Art Project Manager,
ryan.patterson1@maryland.gov.

About the Maryland Public Art Across Maryland Program:

Established in 2013, Public Art Across Maryland is the State of Maryland's Percent-for-Art program. For all new or renovated State-owned buildings, a percentage of the construction budget is set aside for public art.

Independent artists apply for a project through an open Call to Artists and are selected by an artist selection committee. MSAC manages the process from artist selection through design, fabrication, and installation, and the work becomes part of the State public art collection. msac.org

-ATTACHMENTS FOLLOW-

Attachments:

I. Architectural Exhibits provided by Perkins & Will

1. Campus and Site Plans
2. Building First Floor Plan
3. Exterior View from Henry Circle
4. Auditorium Facade Concept
5. Exterior View of Community Inflection
6. Interior View of Community Inflection Level 1
7. Interior View of Community Inflection Levels 2 & 3
8. Exterior View of Amphitheater Courtyard
9. View from Level 2 Student Inflection Toward Courtyard
10. Exterior View from Level 1 Student Inflection
11. Exterior View of Amphitheater Courtyard

II. Public Art Across Maryland: Artwork Commission Scoring Rubric

III. Example Artist Contract

IV. The Following Completed Forms will be Required with the Contract

- Certification Regarding Investment Activities in Iran
- Conflict of Interest Information/Affidavit and Disclosure
- Principles of Social Responsibility and Social Responsibility Affidavit Information

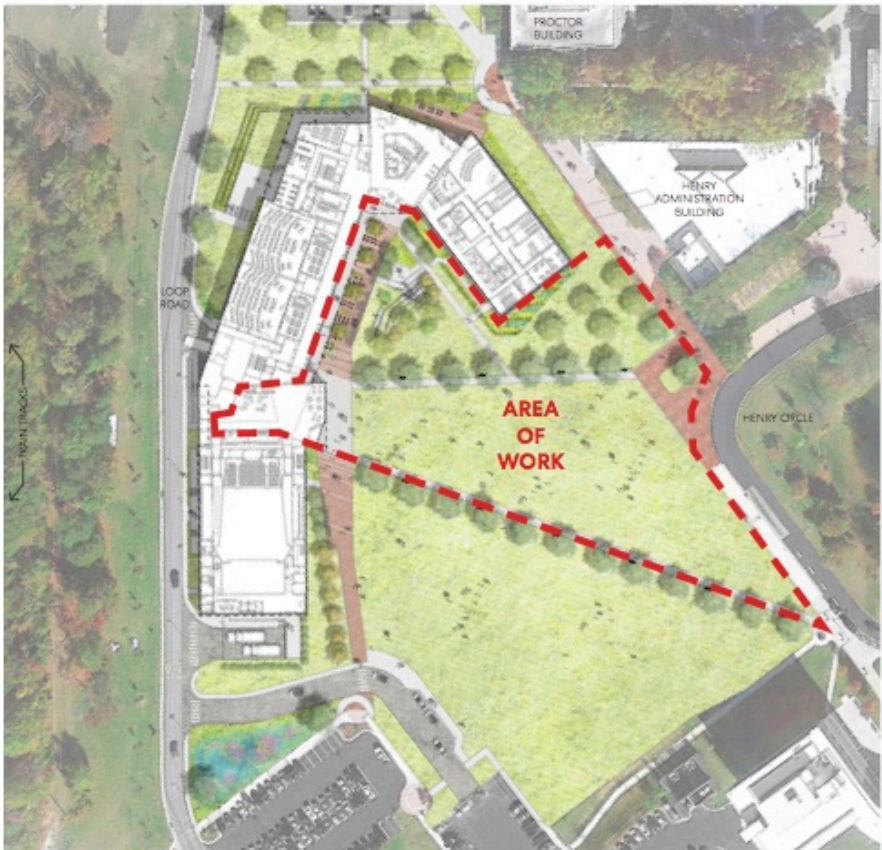
CAMPUS AND SITE PLANS

WT Perkins&Will



CAMPUS PLAN

- Legend**
- Project Boundary
 - Signature Landscape
 - Stormwater Management
 - Tree Cover
 - Greek Plot
 - Area of Work



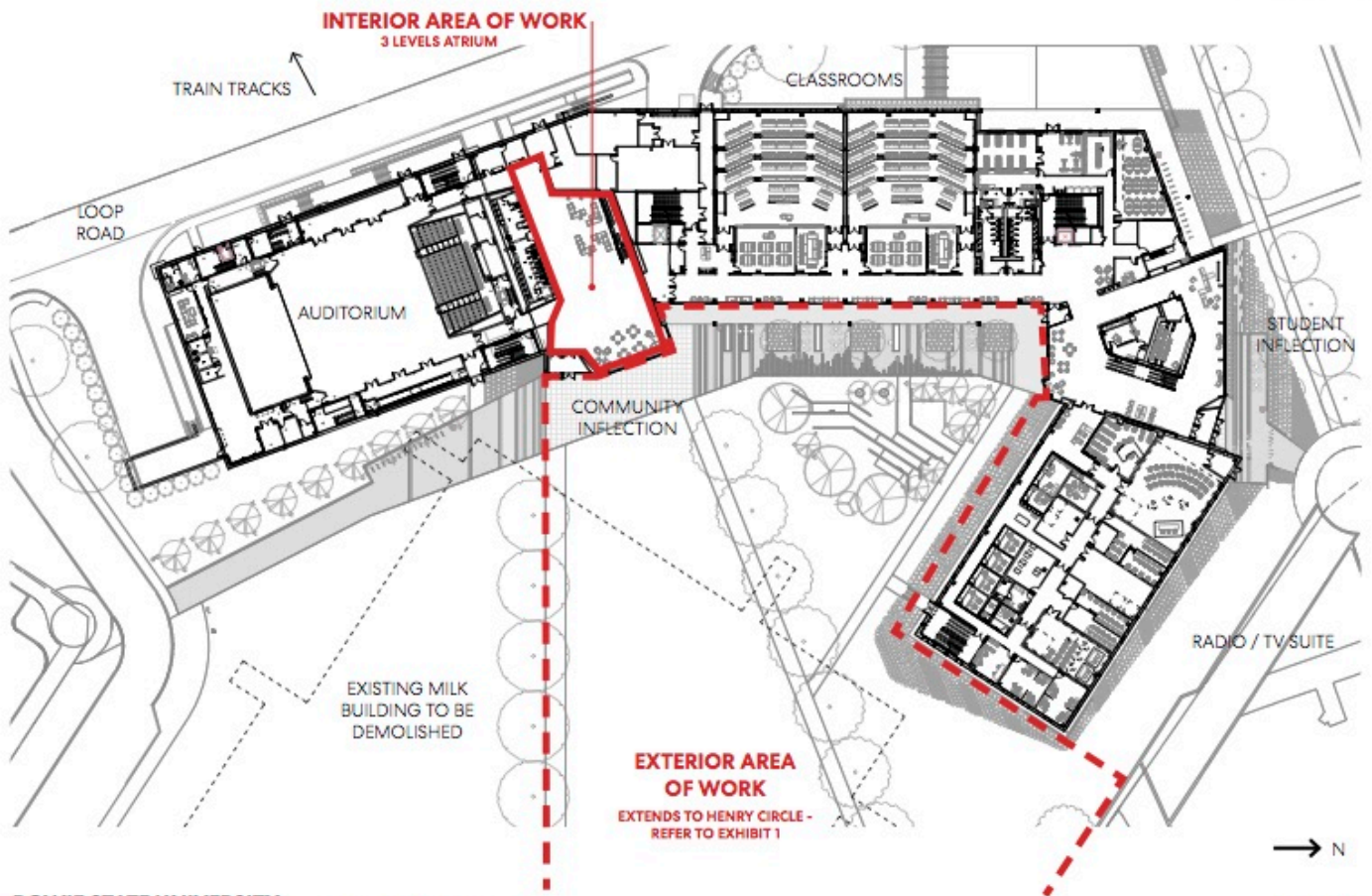
SITE PLAN

BOWIE STATE UNIVERSITY
COMMUNICATION ARTS AND HUMANITIES BUILDING

Exhibit 1

FIRST FLOOR

WT Perkins&Will



BOWIE STATE UNIVERSITY
COMMUNICATION ARTS AND HUMANITIES BUILDING

Exhibit 2

EXTERIOR VIEWS

WT Perkins&Will



EXTERIOR VIEW FROM HENRY CIRCLE

BOWIE STATE UNIVERSITY
COMMUNICATION ARTS AND HUMANITIES BUILDING

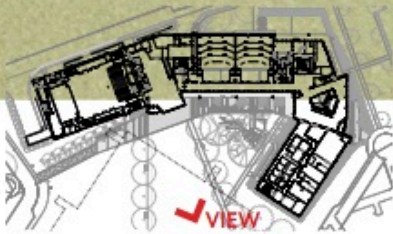


Exhibit 3

AUDITORIUM FACADE CONCEPT

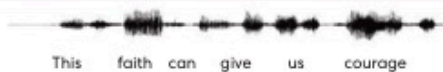
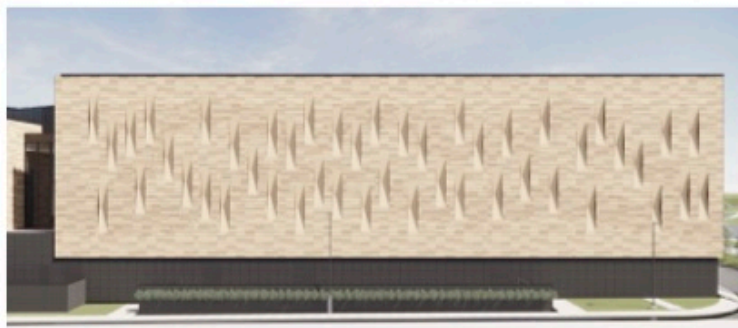
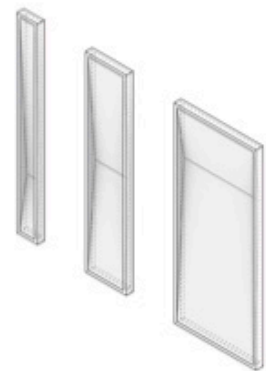
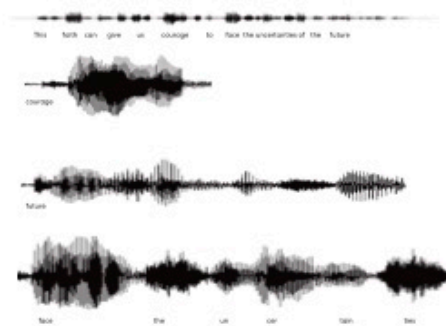
WT Perkins&Will



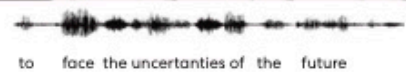
Design inspiration for the articulation of the auditorium wing is based upon a quote by Dr. Martin Luther King, Jr. The pattern represents the inflection of his voice, and relates to an overall theme of empowering voice found in aspects of the architecture throughout the new facility.

This faith can give us courage to face the uncertainties of the future. It will give our tired feet new strength as we continue our forward stride toward the city of freedom. When our days become dreary with low-hovering clouds and our nights become darker than a thousand midnights, we will know that we are living in the creative turmoil of a genuine civilization struggling to be born.

- Martin Luther King Jr.
Acceptance Speech, on the occasion of the award of the Nobel Peace Prize in Oslo, December 10, 1964.



This faith can give us courage



to face the uncertainties of the future

BOWIE STATE UNIVERSITY
COMMUNICATION ARTS AND HUMANITIES BUILDING

Exhibit 4

EXTERIOR VIEWS

WT Perkins&Will



EXTERIOR VIEW OF COMMUNITY INFLECTION

BOWIE STATE UNIVERSITY
COMMUNICATION ARTS AND HUMANITIES BUILDING

Exhibit 5

INTERIOR VIEWS

WT Perkins&Will



INTERIOR VIEW COMMUNITY INFLECTION LEVEL 1

BOWIE STATE UNIVERSITY
COMMUNICATION ARTS AND HUMANITIES BUILDING



Exhibit 6

INTERIOR VIEWS

WT Perkins&Will



INTERIOR VIEW COMMUNITY INFLECTION LEVELS 2 AND 3

BOWIE STATE UNIVERSITY
COMMUNICATION ARTS AND HUMANITIES BUILDING



Exhibit 7

EXTERIOR VIEWS

WT Perkins&Will



EXTERIOR VIEW OF AMPHITHEATRE COURTYARD

BOWIE STATE UNIVERSITY
COMMUNICATION ARTS AND HUMANITIES BUILDING

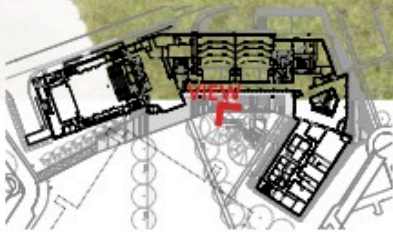


Exhibit 8

INTERIOR VIEWS

WT Perkins&Will



VIEW FROM LEVEL 2 STUDENT INFLECTION TOWARD COURTYARD

BOWIE STATE UNIVERSITY
COMMUNICATION ARTS AND HUMANITIES BUILDING

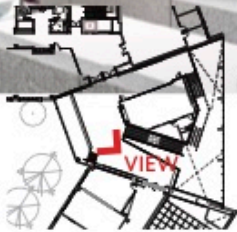


Exhibit 9

EXTERIOR VIEWS

WT Perkins&Will



EXTERIOR VIEW FROM LEVEL 1 STUDENT INFLECTION

BOWIE STATE UNIVERSITY
COMMUNICATION ARTS AND HUMANITIES BUILDING

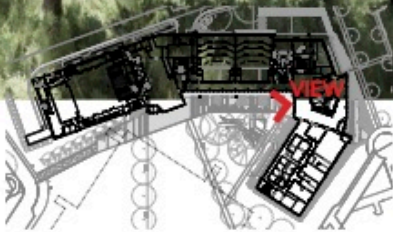


Exhibit 10

EXTERIOR VIEWS

WT Perkins&Will



EXTERIOR VIEW OF AMPHITHEATRE COURTYARD

BOWIE STATE UNIVERSITY
COMMUNICATION ARTS AND HUMANITIES BUILDING

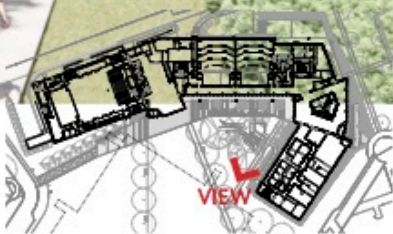


Exhibit 11

Public Art Across Maryland: Artwork Commissions Scoring Rubric

Background work reflects technical skill, authenticity, originality, commitment to material(s)/media, and artistic practice; evokes response or inquiry.			
Background work reflects evidence of proficient technical skill, an authentic and original approach/voice, and demonstrated commitment to material(s)/media	Background work reflects evidence of technical skill, an authentic and original approach/voice, and demonstrated commitment to material(s)/media	Background work reflects some evidence of technical skill, an authentic and original approach/voice, and demonstrated commitment to material(s)/media	Background work reflects minimal evidence of technical skill, an authentic and original approach/voice, and demonstrated commitment to material(s)/media
4 (100%)	3 (75%)	2 (50%)	1 (25%)

Artist's demonstrated experience and Statement of Interest, connects to artwork themes and goals for the public art project			
Artist's demonstrated experience and Statement of Interest clearly and explicitly connect to the themes and goals for the public art project	Artist's demonstrated experience and Statement of Interest connect to the themes and goals for the public art project	Artist's demonstrated experience and Statement of Interest are somewhat connected to the themes and goals for the public art project	Artist's demonstrated experience and Statement of Interest are minimally connected to the themes and goals for the public art project
4 (100%)	3 (75%)	2 (50%)	1 (25%)

Artist's experience as demonstrated by resume			
Resume reflects evidence of proficient artistic practice over time.	Resume reflects evidence of artistic practice over time.	Resume reflects some evidence of artistic practice over time.	Resume reflects minimal evidence of artistic practice over time.
4 (100%)	3 (75%)	2 (50%)	1 (25%)